

Unit 7 ACTIVITY 1 Name/Class _____

Tetrachords (C, G and D), Whole and Half Steps

4-8

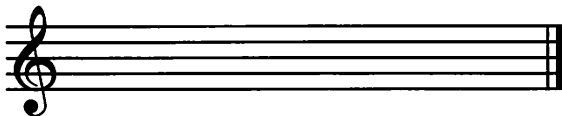
1 The distance from any key on the keyboard to the very next key above or below it, whether black or white, is a _____.

2 The distance from any key on the keyboard to two keys above or below it is a _____.

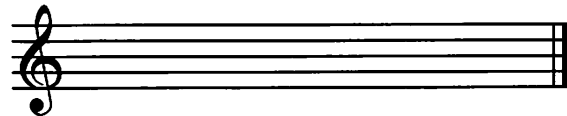
4-8

3 Write the following tetrachords using quarter notes. Use accidentals as needed.*

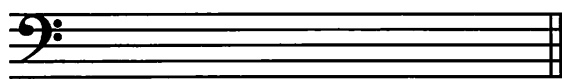
a. the 1st tetrachord of the G major scale



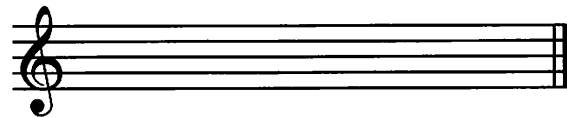
b. the 1st tetrachord of the C major scale



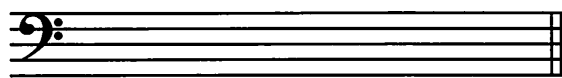
c. the 2nd tetrachord of the C major scale



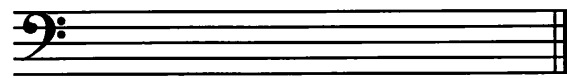
d. the 2nd tetrachord of the G major scale



e. the 1st tetrachord of the D major scale



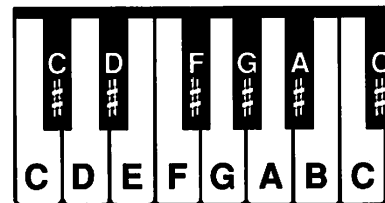
f. the 2nd tetrachord of the D major scale



4-24

*Correct student answers may vary.

4 Write the letter name of the note for each example below, using the keyboard as a guide. Use the next note name (up or down) in alphabetical order. This example uses all the whole and half steps in the C, G and D tetrachords.



a. A half step above E is _____.

b. A half step below D is _____.

c. A half step below F is _____.

d. A half step above B is _____.

e. A half step above F# is _____.

f. A half step below C is _____.

g. A half step below G is _____.

h. A half step above C# is _____.

i. A whole step above D is _____.

j. A whole step below B is _____.

k. A whole step above B is _____.

l. A whole step above E is _____.

m. A whole step above A is _____.

n. A whole step below E is _____.

o. A whole step below F# is _____.

p. A whole step below C# is _____.

q. A whole step above C is _____.

r. A whole step above G is _____.

s. A whole step below D is _____.

t. A whole step below A is _____.

3-60

100

Unit 7 ACTIVITY 2 Name/Class _____

Tetrachords (F, C and B^b), Whole and Half Steps

1 Write a half note in each measure above or below the first half note as indicated. Use the next note name (up or down) in alphabetical order. This example uses all the whole and half steps in the F, C and B^b tetrachords.

- a. whole step below b. half step below c. whole step above d. whole step below e. half step below f. whole step below



- g. whole step above h. whole step above i. half step above j. whole step above k. half step above l. whole step above



- m. whole step below n. half step below o. whole step below p. whole step above q. whole step below r. half step above



4-72

2 Circle the incorrect note in each tetrachord below, then write the correct note name below it.



4-24

3 The tones of a scale are called the _____ (or steps) of the scale.

2

4 The keynote is the _____ and _____ note of a scale.

1-2

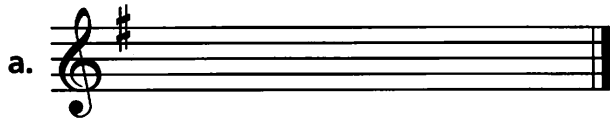
100

Unit 7 ACTIVITY 3 Name/Class _____

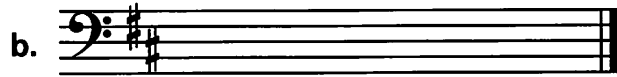
Scales and Key Signatures—C, G and D

1 For each example, name the key and write the scale using quarter notes.

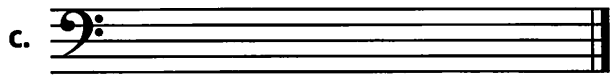
Key of: _____



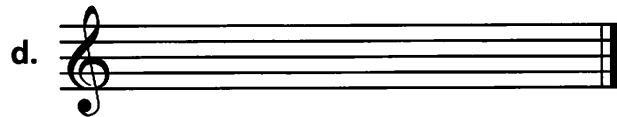
Key of: _____



Key of: _____

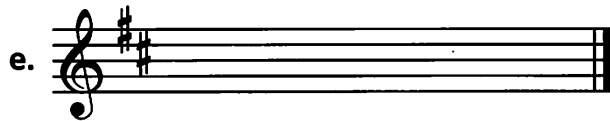


Key of: _____

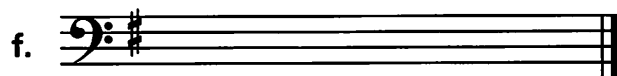


Key
5-30

Key of: _____



Key of: _____



Notes
8-48

2 Draw a line connecting the 1st tetrachord on the left with the 2nd tetrachord on the right to complete a major scale.

1st Tetrachord

2nd Tetrachord

D

G

C

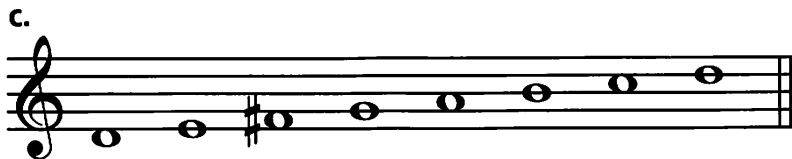
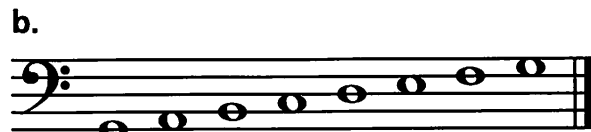
D

G

A

2-6

3 Circle the incorrect note in each scale, then write the correct letter name below it.



2-6

4 Draw a line matching each key signature on the left with the letter names of the corresponding major scale on the right.



D E F# G A B C# D



G A B C D E F# G



C D E F G A B C

2-6

5 The first two sharps in a key signature are _____ and _____.

2-4

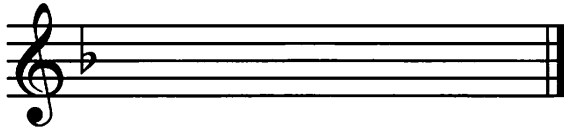
100

Unit 7 ACTIVITY 4 Name/Class _____

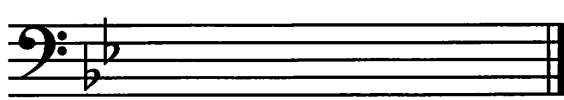
Scales and Key Signatures—F and B^b

1 For each example, name the key and write the scale using quarter notes.

Key of: _____

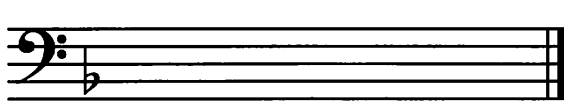
a. 

Key of: _____

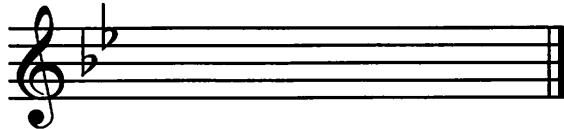
b. 

Key
5-20

Key of: _____

c. 

Key of: _____

d. 

Notes
8-32

2 Draw a line connecting the 1st tetrachord on the left with the 2nd tetrachord on the right to complete a major scale.

1st Tetrachord

F
B^b

2nd Tetrachord

F
C

5-10

3 Circle the incorrect note in each scale, then write the correct letter name below it.

a. 

b. 

5-10

4 Draw a line matching each key signature on the left with the letter names of the corresponding major scale on the right.

a. 

F G A B^b C D E F

5-10

b. 

B^b C D E^b F G A B^b

5 Using the accidentals from the notes on the right, identify the key of each scale and write the key signature on the staff provided.

a. 

A B^b C D E^b F G A

5-10

b. 

A B^b C D E F G A

100

6 The first two flats in a key signature are _____ and _____.

4-8

Unit 7 ACTIVITY 5 Name/Class _____

Scales and Key Signatures—C, G, D, F and B \flat

1 For each of the following key signatures, write the scale using whole notes on the staff provided.

a.

b.

c.

d.

e.

8–40

2 Draw the indicated key signature, then write the scale using whole notes. Be sure to include any accidentals.

Key of D

D major scale

a.

Key of F

F major scale

b.

Key of B \flat

B \flat major scale

c.

Key of G

G major scale

d.

Key of C

C major scale

e.

Keys

4–20

Scales

8–40

100